



Newcomb Newsletter

Term 2, Week 2, Friday 1st May 2026



IMPORTANT DATES

MAY

- 1st - Assembly 2.50pm
- 6th - Yr 5/6 Arts Centre Excursion
- 8th - Super Woman's Stall
- 12th - School Council Meeting 4.45pm (incl. AM)
- 15th - Assembly 2.50pm
- 22nd - Walk Safely to School Day
- 22nd - JSC Nat Geo/Animal Dress up day!
- 18th - 22nd - SSG Meetings
- 27th - Yr 5/6 District Football & Netball
- 29th - Assmby 2.50pm

JUNE

- 4th - NPS Athletics Day
- 8th - King's Birthday Public Holiday
- 9th - Curriculum Day (Professional Practice Day)
- 12th - P&F Meeting 2.15pm
- 12th - Assembly 2.50pm
- 16th - School Council Meeting 4.45pm
- 22nd - Student Led Conferences
- 26th - Assembly 9.00am
- 26th - Children's Fair
- 26th - Early Finish 2.15pm



Dear Parents and Carers,

We hope you all had a wonderful holiday break with time together and some rest! It has been so lovely to see all of our students and families settle back into the new school term.

On the first day of term our staff team were involved in an incredible learning opportunity as we all completed Cultural Perspectives training. This was a big day of learning, connecting and planning for our team. We would like to thank Shantelle Lucas-Baillie and Uncle Richard Fry for being so generous with their time and for sharing their own stories with us on the day. We are looking forward to continuing to grow our focus on culture across the school and the development of our indigenous mentor program.

In our first week back we were also lucky enough to spend an afternoon with paediatrician Billy Garvey and Rebecca Harris. Our staff, and also parents who came along to the evening session, had both confirmation and also new learning around how to best support children and young people. A big thankyou to Carmen for making this opportunity happen for our school community.

We would like to congratulate Cayla Marino who is expecting her first child in August. Her students are very excited for her and we know she will be an incredible Mum. Cayla will start maternity leave in week 5 of Term 3. Shannon Hodge will be taking on the role of classroom teacher in year 5. Shannon has experience teaching in Darwin and Brisbane and has experience in the 5/6 classroom.

Today we farewell Jemma Casey who has been a wonderful Education Support Staff member. We wish her well as she finishes off her teaching degree whilst taking on additional time in her role with Their Care. Over the next few weeks we have three new Education Support Staff starting with us to support students across the school. Billy Henderson, Lisa Van Halen and Erin Cassar will be increasing support across a number of classrooms, as well as expanding our connection sprints. Please make them feel welcome as you see them around the school in coming weeks!

We hope all of our families have a relaxing weekend!
Blanche Denmead & Carmen Britnell

IMPORTANT INFORMATION & UPDATES

SCHOOL REVIEW

The school review was an incredible opportunity to celebrate our small school with a big heart! Our review panel spent a full day in classrooms, talking with focus groups and exploring our curriculum, programs and our data. To say we are proud principals is an understatement!

There were many highlights shared by the review panel, including our continued growth and improvement across many areas in 2025. Student enrolments have increased to 142 students, reflecting the confidence families have in our school community and the programs we provide.

Learning data highlights a number of positive achievements with 77% of students demonstrating medium or high growth in Reading and Writing, and an outstanding 92% achieving medium or high growth in Numeracy from Years 3 to 5. This reflects the impact of our explicit teaching practices and targeted support programs.

Student wellbeing and engagement remain a strong focus at Newcomb Primary School. Attitudes to School Survey results highlighted positive relationships between students and staff, strong advocacy at school, and high expectations for success. Attendance continues to be an important improvement priority, along with communication.

We thank all involved in the review day and look forward to sharing our new strategic plan and annual implementation plan once they are finalised.

INDUSTRIAL ACTION

There are some rolling strikes happening across Victoria this term. This may impact our programs, however we will notify parents/carers if this happens.

Due to reduced meeting hours we will not be hosting our annual maths night. We have also had to delay our undercover area opening until next term. We appreciate your support of our staff at this time.

Parents & Friends 2026

The Parents & Friends have been busy behind the scenes ordering and organising things for our upcoming Superwoman Stall.


We would like to thank our P&F for their fundraising efforts. We were recently able to lay some astro turf out the front of the 3/4 portable as a result of our great fundraising efforts. We have also been able to remove the yarning circle and make plans for it's rebuild with the input of some fundraising.

Our Colour Run was very successful with our school raising \$1,929.20. We'd like to congratulate Malakai Bryans who was our highest fundraiser contributing a whopping \$560!

Next meeting: Friday 12th June at 2.15pm

Junior School Council 2026

In Term 2 the Junior School Council have planned two brilliant events! On Friday 22nd of May we will be holding a National Geographic Animal Dress Up day. The JSC have decided to raise funds on this day for 'Save our Turtles.'



National Geographic - Animal Dress Up Day!

FRIDAY 22ND MAY TERM 2 2026

Proudly organised by the Newcomb PS Junior School Council

Students are encouraged to dress as their favourite animal and to bring along a gold coin donation.

The JSC are raising funds for 'Save Our Turtles.'

The poster features a sea turtle swimming in the ocean. It includes the Newcomb Primary School logo in the top right and bottom left corners.

On Friday 26th of June we will finish off the term with our second event, our annual Children's Fair! This is a kids only event with lots of fun activities organised and run by each class. We will provide further information closer to the day.



NEWCOMB PS

KIDS ONLY

Children's Fair

EARLY FINISH 2.15PM

FRIDAY 26TH JUNE

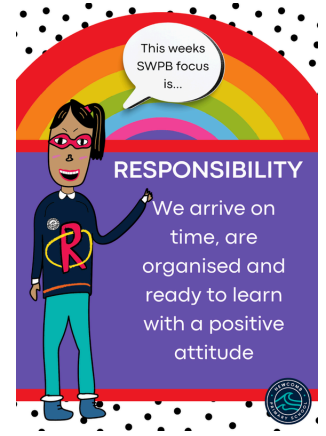
ACTIVITIES INCLUDE COLOURED HAIRSPRAY, NAIL POLISH, YUMMY TREATS & SECOND HAND GOODS STUDENTS PLEASE BRING ALONG UP TO \$20 FOR ACTIVITIES & A DONATION

PYJAMAS OR CASUAL DRESS

FUNDRAISING FOR CANCER - CANTEEN AUSTRALIA

The poster is colorful with a blue sky, green grass, and white flowers. It features the Newcomb Primary School logo in the center.

Values Awards



Student of the Week Awards

Congratulations to these students who have shown a positive approach to their schooling!



INCLUSION AT NEWCOMB



Meet Bronwen Miller - Inclusion Learning Specialist

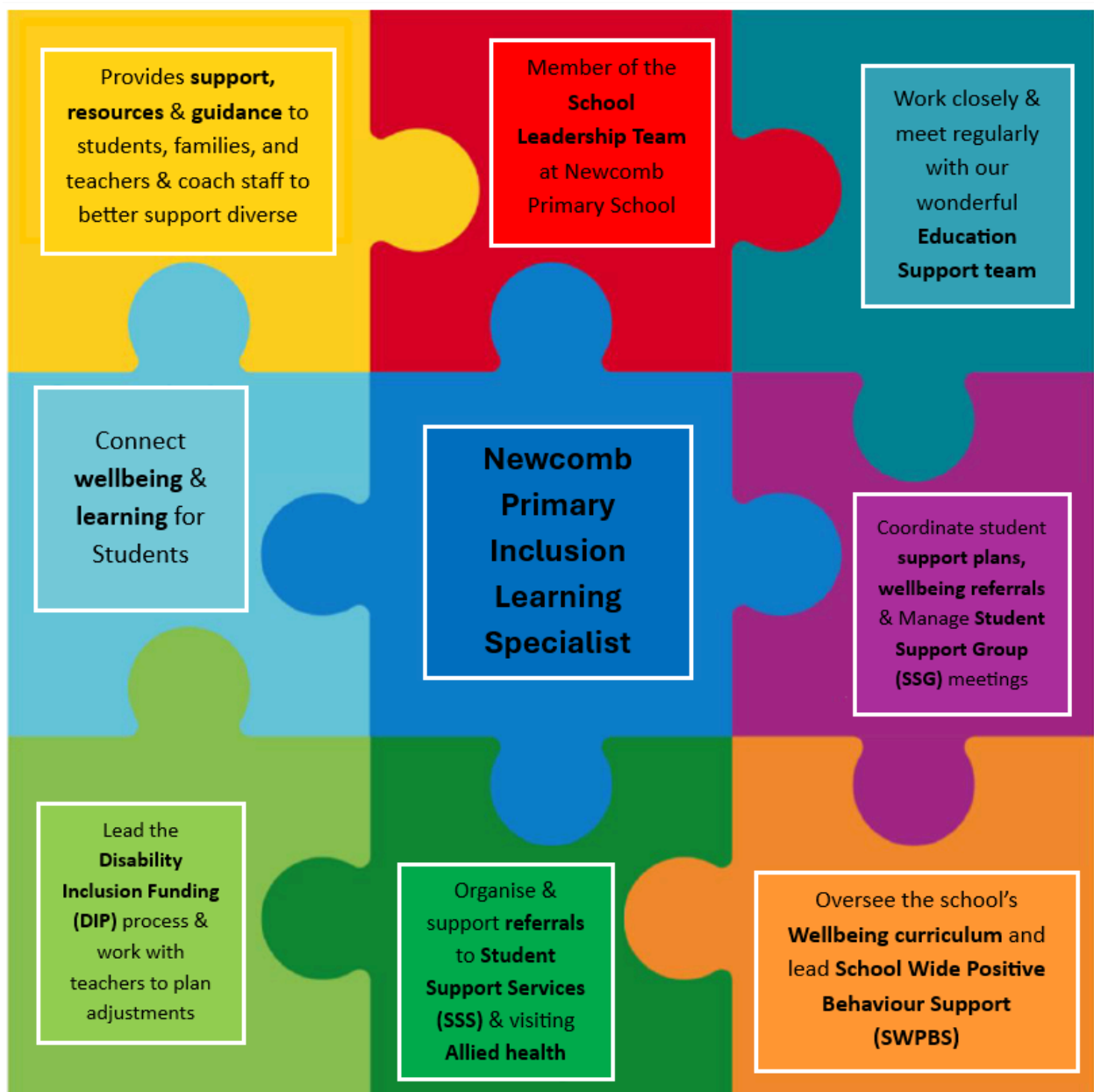
- My name is Bronwen Miller.
- I come to this role with over 25 years of experience in teaching and 5 years as a Learning Specialist, working across a range of classroom and leadership roles in education.
- I believe all students deserve the opportunity to make growth from where they are at, and I bring a strong foundation of experience, empathy, and understanding to supporting learners, families, and staff.
- As the Inclusion Learning Specialist at Newcomb Primary School, I support students, families and teachers to ensure every child can learn, feel safe and participate fully at school, while building strong partnerships between school and home.

In simple terms, my role is to help ensure that:

- Every child is understood
- Every child has the right support
- Teachers/Staff are supported to make learning accessible
- Families are included in planning and decisions
- Students feel safe, included, and ready to learn

If you have any questions, please contact the school office and I will be in touch.

Bronwen Miller



TROOP DISTRICT CROSS COUNTRY

ON WEDNESDAY THE 29TH APRIL WE HAD ALANZA FRANCIS, ALFIE ALFORD, FRANKIE MEAGHER AND IVY ALFORD REPRESENT NEWCOMB PRIMARY AT THE TROOP DISTRICT CROSS COUNTRY AT EASTERN GARDENS. ALL COMPETITORS REPRESENTED THEMSELVES AND OUR SCHOOL WITH GREAT PRIDE. CONGRATULATIONS TO ALFIE ON HIS 4TH PLACE FINISH IN THE 9/10 YEAR OLD BOYS EVENT AND IVY WITH HER 2ND PLACE FINISH IN THE 11 YEAR OLD GIRLS EVENT.

BOTH STUDENTS HAVE QUALIFIED FOR THE NEXT ROUND OF DISTRICT CROSS COUNTRY.

THANK YOU FOR THE FAMILIES FOR SUPPORTING OUR ATHLETES ON THE DAY, AND OUR STUDENTS SUPPORTING EACH OTHER THROUGH THE EVENTS





NEWCOMB PRIMARY SCHOOL

You are invited to join our

WORKING BEE

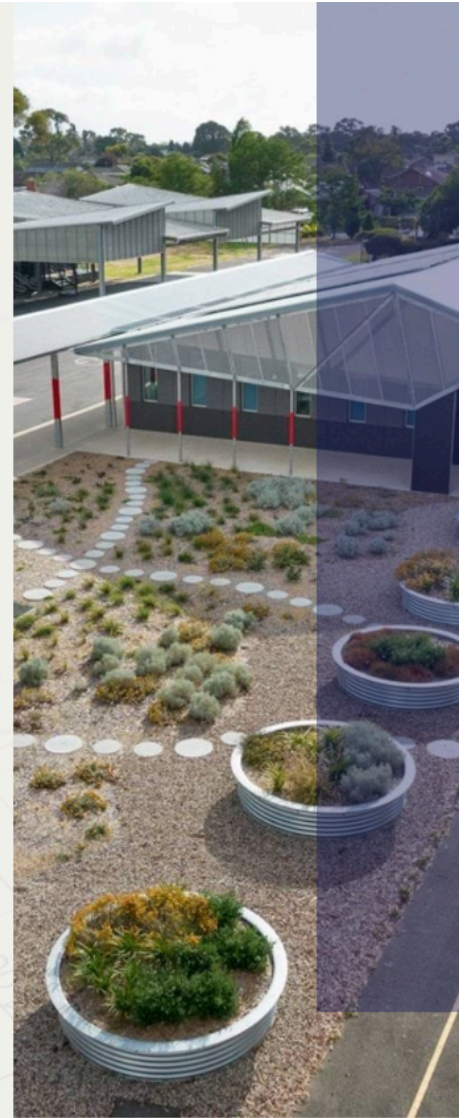
**SUNDAY 24TH MAY
10:00AM-1:00PM**

What to bring:

- Gardening gloves
- Gardening tools e.g. weeding tools, shovel, wheelbarrow, clippers - only if you have them!
- Sunscreen and hat!

Come along, meet new families and help make our school beautiful for our children to enjoy.

Light refreshments will be provided by the school.



SUPERWOMAN STALL

It's time to celebrate the amazing Mother's, Grandmothers, Aunties & Carers this Mother's Day!

Students have the opportunity to buy something special from our stall.

Students are asked to bring up to \$10 and a plastic/paper bag.



Friday 8th May 2026



Proudly organised by our Parents & Friends Group



Sew & Style: Fashion Accessories

For ages 9+
Learn hand and machine sewing skills while making fashion accessories.
With Simone Amethyst

MONDAY
4 - 5:30 PM
8-WEEKS
\$285



BLUEBIRD
FOUNDATION INC.

Term Two Workshops 2026

Small-group, artist-led workshops in art making, illustration and sewing.

Hosted in our cosy Bluebird House studio, sessions nurture creativity, confidence and self-expression in a gentle, welcoming space.

- ✓ NDIS invoices available
- ✓ Trial sessions welcome - get in touch to find the right fit

Check out our Teen Studio class (Thursday 5:15pm), and Adult Sewing, Felted Easter Eggs and Creative Mindfulness Workshops available on our website.

We can't wait to welcome you to Bluebird House.



Furry Friends Art Studio

For ages 7+
Build core drawing, painting and sculpting skills by creating artworks inspired by your pet & favourite animals with Natalie Iacono & Luke Matthews

TUESDAY
4 - 5 PM
8-WEEKS
\$245



Sew & Style: Young Makers Studio

For ages 6 +
A playful introduction to sewing and crafting where young creatives build foundational skills through hands-on projects using yarn, fabrics, beads, and stitching.
With Simone Amethyst

WEDNESDAY
4:15 - 5:15 PM
6-WEEKS
\$185



Character Illustration

For ages 8+
Creative drawing skills workshop, design your own characters and bring them to life.
With Melissa O'Shea

THURSDAY
4 - 5PM
8-WEEKS
\$245



Enrol: bluebirdfoundationinc.org.au/workshops



Newcomb Primary Lunch Menu

- Yoghurt and granola \$4
- Ham and cheese toastie \$4.5 gf available
- Cheese toastie \$3.5 gf available
- Fruit salad \$4.5
- Ham salad wrap \$6 gf available
- Chicken salad wrap \$6
- Chicken Caesar wrap \$6.50
- Salad wrap \$5.50
- Party pie \$2.50
- Sausage roll \$6
- Meat Pie \$6
- Vegemite sandwich \$3 gf available
- Cheese sandwich \$3 gf available
- Ham and cheese sandwich \$4 GF available
- Egg & lettuce sandwich \$4
- Nuggets \$4 (4 pieces)
- Carrot sticks and hommus \$3
- Chicken salad bowl \$6
- Picky plate cherry tomato cucumber
cheese cubes celery carrot sticks capsicum sticks ham
boiled egg \$6.50
- Apple \$2
- Banana \$2
- Popcorn \$2
- Choc milk \$3
- Strawberry milk \$3
- Apple juice \$3
- Orange juice \$3
- Choc chip cookie \$3
- Blueberry muffin \$4
- Banana Bread (toasted & buttered) \$4

Lunch Orders

provided by
local cafe
Winston &
Co


Available on
Mondays

Get your orders
in using the
Flexischools
app

Order by 8am

Flexischools


Our school is online with Flexischools



Scan the QR
code to
download
the app


Step 1
Register with Flexischools

- 1 Download the Flexischools app and click "Sign Up."
- 2 Enter your email to **create an account**.
- 3 Go to your inbox and click the link to **verify your email**.
- 4 Follow the prompts to complete your registration.




Step 2
Enter your child's details

- 1 In the navigation bar, add your student(s) under "Profile" > "Students" > "Add new."
- 2 Add your child's details to the new student profile.



Step 3
Place an order

- 1 On the home page, click the "Order food" button.
- 2 **Select the student** you would like to order for. Choose a **service** and **order date**.
- 3 **Select the items** you would like to order
- 4 Click "View order" and select "Checkout and pay" to place your order.



Issued by InLoop ACN114 508 771 AFSL 471558. Read PDS & TMD at www.flexischools.com.au/legal. Advice is general & doesn't consider your needs.

Need more help?

Flexischools' customer support team is available
Monday - Friday 7AM - 4PM AEST on 1300 361 769.

www.flexischools.com.au



Term 2 2026

	Monday	Tuesday	Wednesday	Thursday	Friday
1	20th April Curriculum Day 2027 Prep enrolments Open	21st April First day Term 2 for students	22nd April Dr Billy Garvey PL	23rd April	24th April ANZAC Day Service 9:00am.
2	27th April All Day: Whole School Photo Day - ARP	28th April	29th April District Cross Country	30th April	1st May 2:50PM Assembly All welcome
3	4th May	5th May 3.15 Consultative Meeting	6th May 5/6 Excursion to The Arts Centre	7th May	8th May Super Woman's Day Stall
4	11th May Lockdown Drill 10.50am	12th May Family Maths Afternoon 4.45pm School Council	13th May	14th May	15th May 2:50PM Assembly All welcome
5	18th May SSG Meetings (KESO)	19th May SSG Meetings Division X-Country	20th May SSG Meetings	21st May SSG Meetings	22nd May SSG Meetings Walk Safely to School Day JSC Event: Nat Geo/Animal Dress Up Day!
6	25th May	26th May National Sorry Day	27th May District Football and Netball (Yr5/6) Reconciliation Week	28th May Reconciliation Week	29th May 2:50PM Assembly All welcome
7	1st June Reconciliation Week	2nd June Reconciliation Week	3rd June Reconciliation Week	4th June Whole School Athletics Day	5th June
8	8th June King's Birthday	9th June Curriculum Day (Professional Practice Day) 3.15 Consultative Meeting	10th June	11th June	12th June 2:15pm - P&F Meeting 2:50PM Assembly All welcome
9	15th June	16th June 4.45pm School Council	17th June	18th June 11am 100s Club	19th June
10	22nd June Student Led Conferences	23rd June	24th June Reports on Compass	25th June	26th June Last day of Term 2 9:00am Assembly 11.30 Children's Fair 2:15pm finish



Hope, Healing & Heart - A Learning Day in Paediatric Palliative Care

This is **FREE** for Professionals & Carers

A dynamic Paediatric Palliative Care Learning Day showcasing expert perspectives, innovative practices, and emerging models of care designed to strengthen support for children with life-limiting conditions and their families, including bereavement care across Victoria.

Program/Speakers:

- MC | **Jess Holmes**, Mother of Henry, sharing lived experience and connection to all organisations
- Very Special Kids | **Dr Katie Moore**, Chief Medical Officer and the Barwon Region Family Support Practitioner
- Victorian Paediatric Palliative Care Program, Royal Children's Hospital | **Mel Heywood**
- Starlight Moments | **Sarah Sivaraman**
- Ronald McDonald House Victoria & Tasmania | **Fiona Giles**, Education Coordinator
- Precious Wings | **Kerry Gordon**
- Precious Touch | **Gail Johnson**
- River's Gift & The Compassionate Friends Victoria (TCFV) | **Alexandra Hamilton**
- Memory Making Session | **Kerry & Gail**

- **Thursday 11 June 2026**
- **09.00am to 3.00pm**
- **Mount Duneed Estate**
65 Pettavel Road
Waurin Ponds Victoria
Morning tea & light lunch provided
- **Parking available at venue**

**REGISTER BY SCANNING
OR CLICKING THE QR CODE!**



Registrations close on 27th May



Proudly sponsored by:





GEE LONG YOUTH CHOIR PRESENTS

WE SING

A COMMUNITY ENGAGEMENT PROJECT



FREE 2026 Program for Primary & Secondary Students

WHAT'S INCLUDED

- Open to students aged 8-18 from Geelong region
- No interruption to school - weekends only
- Fully supervised - no teacher needed
- Parent/Guardian to complete enrolment form
- Massed choir performance with orchestra
- Digital learning materials sent to student and nominated teacher with support available
- Great development or extension opportunity
- Individuals, small groups or full choirs welcome



Program Schedule

Workshop 1

Sunday 24 May
2-4pm
Deakin Uni
Waurin Ponds

Workshop 2

Sunday 31 May
2-4pm
Deakin Uni
Waurin Ponds

Performance Day

Saturday 13 June
10am-4pm
Katsumata Centre
Bell Post Hill

Performance
Day Audience
Tickets
Adult: \$5
Under 18: free

Deadline
Extended
ENROL BY
10 MAY!

Sign Up Now!



PARENT/GUARDIAN
Scan the QR code
to ENROL YOUR
CHILD

Support available. Information
video sent to participants.

Enquiries

Genevieve Newton
GYC Project Manager
geelongyouthchoir@gmail.com

HOW SCHOOLS CAN BE INVOLVED

- Promote the program to your school community using this flyer and in your school newsletter
- Talk to your students about getting involved
- Encourage parents to enrol one or more child
- Teach the two massed-choir songs at school using the digital learning materials provided
- Refer students to GYC's Wednesday rehearsals held after school during term 2 (no charge for program participants)



Supported by a City of Greater Geelong Community Grant

Igniting an interest in the joy of community singing



CHRISTIAN
COLLEGE
GEELONG



DISCOVER YEAR 7 & BEYOND

*ATOUR OPEN
EVENINGS*

Bellarine Campus
May 5th, 6pm - 7pm

Highton Campus
May 6th, 6pm - 7pm

Surf Coast Campus
May 7th, 6pm - 7pm



*Scan here for more information
and to register your interest!*

www.christiancollege.vic.edu.au



NEWCOMB PRIMARY SCHOOL

NEWCOMB@KELLYCLUB.COM.AU
0448 058 160 | 1300 535 590



BEFORE SCHOOL CARE

7:00AM - 8:30AM

\$2.30

***AFTER 90% CCS OR
\$22.97 FULL FEE**

AFTER SCHOOL CARE

3:15PM - 6:00PM

\$3.03

***AFTER 90% CCS OR
\$30.28 FULL FEE**

ENROL NOW AND JOIN THE
KELLY CLUB FUN!
SCAN HERE



Early childhood approach

As an NDIS partner delivering the early childhood approach, Meli is your main contact point for the NDIS. Meli will help you understand and access the most appropriate supports for your child.

Meli gives you information about how we can help your child with early childhood supports.

Meli works with you to make sure you and your child get the right support if they are:

- younger than 6 years and have developmental delays or concerns, or
- younger than 9 years and have a disability.

Meli can make recommendations about what early connections will be best for your child. These may include:

- connection with other mainstream and community supports
- practical information that is relevant to your child's development
- connecting you with other families for peer support
- early supports
- help to apply to the NDIS.



Early connections are for children who have delays in their development or have a disability.

Early connections are supports that will meet your child's needs and build upon their strengths.

You can refer your child yourself through the Meli website, or you can ask someone who is supporting your family to assist you.

Contact the Meli team

By email:
meli.earlychildhood@ndis.gov.au

By phone: 1300 012 293

By mail or in person:

Meli Early Childhood
W7/8 33 Mackey St
North Geelong
Victoria, 3215

Want to know more?

Scan the QR code or visit meli.org.au/early-childhood/early-childhood-approach-ndia

