



Newcomb Newsletter

Term 1, Week 4, Friday 20th February



IMPORTANT DATES

FEBRUARY

20th - Assembly 2.50pm
23rd - Prep Geelong Advertiser Photo
25th - No school for Preps
27th - Clean Up Australia Day

MARCH

2nd - 6th - SSG Meetings
3rd - Parent Teacher Meet & Greets
6th - Assembly 2.50pm
9th - Labour Day Public Holiday
11th - 23rd - NAPLAN
16th - School Tour (2027 Enrolments) 9am
17th - School Council AGM 4.45pm
18th - Whole School Cross Country
19th School Tour (2027 Enrolments) 9am
20th - Harmony Day
20th - P&F Meeting 2.15pm
20th - Assembly 2.50pm
24th - NPS School Review
26th - 100s Club
31st - 'The Protectors' Performance

APRIL

2nd - 9am Assembly & Easter Raffle, 1.30pm
Colour Run, 2.15pm - Early Finish



Dear Parents and Carers,

Over the first three weeks of the school years our students all participate in the 'Jump Into Newcomb' Program. This program involved a wide range of activities and learning around school routines and expectations, whilst establishing solid friendships and classroom community connections. We celebrated the completion of this program with a wonderful excursion to Eastern Gardens and Eastern Beach. The students and staff had a wonderful day in the sunshine playing and exploring together!

This week we started our formal learning with classes getting stuck into explicit teaching and learning of all subject areas including English, Maths, Core Knowledge, Social and Emotional Learning and our Specialist subjects (Art, STEM and Sport/PE.) It is great to see how settled the students are and how quickly they have established positive connections with their new classroom teachers and Education Support staff.

This week we held our open morning and it was wonderful to see so many families come and join us in learning for the morning. In a few weeks we have our Meet and Greet sessions and we encourage you to log into Compass to make your bookings for some time with your child's teacher. This is a great opportunity to share your experiences and knowledge of your child with their classroom teacher for the year.

Later this term we have our whole school cross country on March 18th. Mr. Benn is planning a course for us at Erwin reserve which will make for a fun day out for all. We encourage parents to come along on the day.

Finally, we would like to welcome the following students who have joined our learning community this year: Arel in Year 2, Adel in Year 4, Elise in Year 4, Kira in Year 5 and Brielle in Year 6. We warmly welcome you all into our school community.

Please come and see us anytime!
Blanche Denmead & Carmen Britnell

IMPORTANT INFORMATION & UPDATES

NAPLAN 2026

This term our Year 3 and Year 5 students will undertake the National Assessment Program - Literacy and Numeracy (NAPLAN.) NAPLAN provides schools with valuable information about your child's learning progress in literacy and numeracy. NAPLAN is just one of the ways that we assess student learning.

Our teachers, Miss. Chelsey and Miss. Cayla are working hard to prepare our students for the NAPLAN assessments with the support of our capable AP, Mrs. Evans. Students are becoming familiar with the question types, as well as the online testing platform that is used.

We have planned the following dates for each of the assessments and encourage parents to ensure their children are on time and at school on the following dates:

- 11th March - Writing
- 12th March - Reading
- 17th March - Language Conventions
- 18th March - Numeracy

You can support your child by reassuring them that NAPLAN is a part of their school program. We are able to apply some adjustments (ie. additional time) for those students who qualify for this. Please contact Mrs. Evans if you wish to discuss the adjustments available if required.

You can support your child by reminding them to simply do their best on the day. You can also encourage a healthy diet, drinking enough water, getting enough sleep and exercise. Parent information can be viewed in this [flyer](#) or via the NAPLAN website at <https://www.vcaa.vic.edu.au/assessment/foundation-10/naplan/information-parents-and-carers>.

MEET & GREET BOOKINGS

Thanks to those parents who have booked in for a meet and greet with your classroom teacher. This is a great opportunity for you to meet with your child's teacher and share about your child's strengths, challenges.

These will be happening on the afternoon of Tuesday 3rd of March. If you haven't already please log into Compass to book a time prior to Wed 25th February.

SCHOOL REVIEW 2026

We will be having our school review in late March. This is a full day process and will provide a valuable opportunity to reflect on our strengths and identify clear priorities for improvement. The day will involve an external reviewer working alongside our SEIL, Shelby Papadopoulos, and two challenge partners who are principals from other local schools, ensuring a balanced, rigorous, and collaborative process.

The review team will conduct focus group discussions with students, parents, and staff to gather a broad range of perspectives on learning, wellbeing, engagement, and communication, ensuring the voices of our whole school community are heard. Classroom observations will take place across a range of year levels to see teaching and learning in action, with attention to instructional practices, student engagement, and learning environments. The team will also undertake a thorough analysis of school data, including student achievement, attendance, and wellbeing information, to build an accurate and evidence-informed understanding of our current performance.

The outcome of this process will be the development of our new four-year Strategic Plan, which will set clear goals and priorities to guide our school's direction and continuous improvement.

OPEN MORNING - THANKYOU!

Yesterday we held our annual open morning at school and it was so wonderful to have so many families come along to see their child/ren in the classroom or specialist sessions. We love working with families as a partnership to support learning and are always grateful for the support we get here at Newcomb Primary School.

We are also incredibly proud of the work our students are doing and it has been lovely to see many students settle quickly into our formal learning program this week.



Junior School Council 2026

The Junior School Council at Newcomb Primary School plays a vital role in our school community, giving students a voice and a chance to make a positive impact. The council will meet every fortnight during lunchtime with Miss Cayla to plan exciting events and fundraisers. Each term, they focus on supporting a local charity, working together to raise funds and awareness for causes that matter. Their hard work and dedication not only foster leadership skills but also encourage a spirit of giving and community within the school. Keep an eye out for their upcoming initiatives and be ready to get involved!



School Council 2026

The School Council plays a crucial role in supporting the school's decision-making process, working alongside staff and the wider community to improve the educational experience for all students. Council members help shape school policies, support fundraising efforts, and contribute ideas for school events and initiatives.

Being a part of the School Council offers a valuable opportunity to make a meaningful impact on the school community, while also gaining insight into the workings of the school.

We are excited to announce **Glenda Human** and **Rachel Smith** as the successful parent nominees to join School Council this year. **Sherridan Woolard** is also the successful staff nominee. We look forward to their contributions and appreciate their commitment to making Newcomb Primary an even better place for our students!

We will be introducing all parent and staff representatives in the next school newsletter. Keep an eye out at our school assemblies, too, as many of our representatives will be present to chat to members of our community.

If you have any ideas, suggestions or feedback about our school please feel free to contact any member of school council or email our School Council President at pinkpawprincess@hotmail.com.


The school council meeting dates for 2026 are:

- Term 1 - 10th February & 17th March (AGM)
- Term 2 - Tuesday 13th May & Tuesday 17th June
- Term 3 - Tuesday 28th July & Tuesday 1st September
- Term 4 - Tuesday 20th October & Tuesday 1st December

PARENTS & FRIENDS ★ GET-TOGETHER ★

★ Connect ★ Share ★ Inspire ★

 **Friday 20th March**

 **2:15 PM**

 **Community Room**

- ★ Meet other families
- ★ Share ideas & suggestions
- ★ Hear about upcoming events
- ★ Volunteer opportunities

 Light refreshments provided



Let's strengthen our school community
together!

All parents & friends welcome!



NEWCOMB PRIMARY SCHOOL

You are invited to join our

WORKING BEE

**SUNDAY 1ST MARCH
10:00AM-1:00PM**

What to bring:

- Gardening gloves
- Gardening tools e.g. weeding tools, shovel, wheelbarrow, clippers - only if you have them!
- Sunscreen and hat!

Come along, meet new families
and help make our school
beautiful for our children to enjoy.

Light refreshments will be provided by the
school.





CROSS COUNTRY

- 11:45 12/13 GIRLS AND BOYS - 6 LAPS (3KM)
- 12:00 11 GIRLS AND BOYS - 6 LAPS (3KM)
- 12:15 9/10 GIRLS AND BOYS - 4 LAPS (2KM)
- 12:30 GRADE 2 - 3 LAPS (1.5 KM)
- 12:45 GRADE 1 - 2 LAPS (1 KM)
- 1:00 PREPS (BUDDIES TO RUN WITH PREPS) - 1 LAP (500 M)
- 1:15 RIBBON PRESENTATIONS

THE AGES FOR THE EVENTS ARE CALCULATED AT 31ST DECEMBER 2025 (I.E. THE AGE THEY TURN THIS YEAR IS THE GROUP THEY RUN IN.)

Students need:

- A hat, sunscreen and a drink bottle!
- To wear a Tshirt in their house colour if they have one. If not students can just wear their school Tshirt

SHOUT OUT TO MR BENN FOR ALL OF HIS ORGANISATION TO MAKE THE DAY FUN FOR ALL!

18TH MARCH

▶ **NEWCOMB PS**

11.30-1.30PM





NEWCOMB PS COLOUR RUN

THURSDAY 2nd APRIL

1.30 - 2.15 pm

- Get your fundraising page set up and help us fundraise for a astro turf in front of the 3/4 portables
- Students are encouraged to wear a white Tshirt on the day so their colours shine!
- We are looking for some parent volunteers to help out on the colour stations. Please contact the office to add your name to the list.

3CV

NEWSLETTER

WHAT A FANTASTIC START TO THE TERM IN 3CV!
EVERYONE HAS COME BACK FROM THE HOLIDAYS REFRESHED, POSITIVE, AND READY TO LEARN. IT HAS BEEN WONDERFUL TO SEE STUDENTS SETTLING STRAIGHT BACK INTO CLASSROOM ROUTINES AND APPROACHING THEIR LEARNING WITH ENTHUSIASM AND FOCUS. WE RECENTLY CELEBRATED NPS DRESS UP DAY, AND WHAT A SIGHT IT WAS! EVERY STUDENT PUT IN AN AMAZING EFFORT — THE CREATIVITY AND SCHOOL SPIRIT ON DISPLAY WERE INCREDIBLE. EVERYONE LOOKED AWESOME, AND IT WAS SUCH A FUN WAY TO COME TOGETHER AS A SCHOOL COMMUNITY.



OUR EXCURSION WAS ANOTHER HIGHLIGHT OF THE PAST FEW WEEKS. WE WALKED ALL THE WAY FROM RIPPLESIDE PARK TO EASTERN BEACH. IT WAS A BIG DAY FILLED WITH FRESH AIR, BEAUTIFUL VIEWS, AND LOTS OF STEPS! THERE WERE CERTAINLY A FEW TIRED KIDDIES BY THE END OF IT, BUT THEY SHOWED GREAT RESILIENCE AND REPRESENTED 3CV BEAUTIFULLY.



WE HAVE ALSO BEGUN OUR WEEKLY VISITS TO NEWCOMB LIBRARY. STUDENTS ARE LOVING THE OPPORTUNITY TO EXPLORE AND BORROW FROM SUCH AN EXTENSIVE RANGE OF BOOKS. IT'S WONDERFUL TO SEE THEIR EXCITEMENT ABOUT READING CONTINUE TO GROW EACH WEEK. WE ARE LOOKING FORWARD TO ANOTHER BUSY AND EXCITING FEW WEEKS AHEAD IN 3CV! 🇺🇸 ✨



4TB 2026

NPS DRESS UP / EASTERN BEACH EXCURSION

WE ENJOYED A WONDERFUL EXCURSION TO EASTERN BEACH, WHERE WE TOOK IN THE BEAUTIFUL WATERFRONT VIEWS, ENJOYED A RELAXING WALK ALONG THE PROMENADE, AND EXPLORED THE LOCAL SIGHTS. IT WAS A FANTASTIC OPPORTUNITY TO GET OUT AND ABOUT TOGETHER, SOAK UP THE FRESH AIR, AND APPRECIATE EVERYTHING OUR LOCAL COMMUNITY HAS TO OFFER.

WE ALSO HAD GREAT FUN CELEBRATING OUR EXCITING JUMP INTO NEWCOMB PROGRAM WITH A SPECIAL DRESS-UP DAY! EVERYONE GOT CREATIVE, DRESSING UP AS SOMETHING STARTING WITH N, P, OR S. IT WAS WONDERFUL TO SEE SO MANY IMAGINATIVE COSTUMES AND SMILING FACES AS WE MARKED THIS NEW CHAPTER TOGETHER.



Values Awards



Student of the Week Awards

Congratulations to these students who have got straight into learning at the beginning of the year!

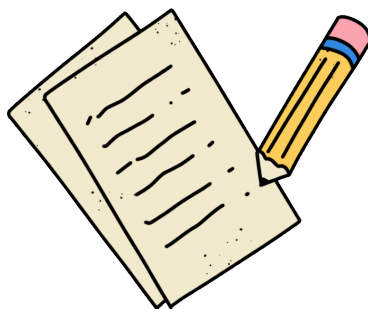




LINING UP ROUTINE

The last couple of weeks have been full of learning! At NPS we have many different routines to assist the children with their cognitive load. Freeing up their working memory, assists with learning and therefore retaining knowledge. One of these routines is for lining up. All students know what SSS means: Straight, Silent & Sensible.

These photos show how amazing we already are at following expectations.



WHAT KIND ACTS HAVE YOU SEEN TODAY?

ASSESSMENT

Beginning of Year

Over the last couple of weeks classroom teachers have completed the beginning of year math assessments.

Students worked on an iPad to answer a series of questions related to Algebraic Thinking, Geometry, Measurement & Data, and Numbers & Operation. It's amazing to see how many of our students are already superstars with their mathematical knowledge.

Year 1-6 students have completed a writing sample using the prompt 'Through the Door'. There were lots of wonderful and exciting narratives to read. It would be great to ask your child about their ideas.

NAPLAN begins this term for our Year 3 and 5 students on 11th March. The children are already beginning to prepare for these assessments. More information on this will be sent home in the coming weeks.

Professional Learning

This week, some members of our SWPB team went to 'The Victorian Academy of Teaching and Leadership' to work with Terry Scott. Dr Scott is an expert in behaviour analysis and classroom management. Bron, Kylie, Tyler and Mel all came away from the day with many strategies to use that provide the highest probability for student success.

Thanks, and have a great week
Robyn Evans
Assistant Principal

WELLBEING AT NEWCOMB

Hi All

I have seen lots of you around over the last couple of terms. I'm Miss.Kylie, Mental Health and Wellbeing Leader. I am currently working Monday, Tuesdays and Wednesdays at Newcomb Primary School.

My role is to primarily work with Teachers to support and work alongside them to promote good mental health. I do wellbeing check in's with students to see how they are travelling. I mostly do these after a parent has come to see me and tells me that their student might just need to someone to check in and see how their day is going, maybe check on friendships, a bit of resilience boost or building connections (I play a lot of UNO and lately charades has been popular).

If you have concerns please pop in and see me, I am at the entrance of the building where the preps, ones and two's are - the B.E.R.

Below is a conversation I have had with many parents and teachers. Does this resonate with you !?



When flight attendants give their pre-flight safety instructions, one of the things they tell you is that, in the case of a change in cabin pressure, be sure to place the resulting oxygen mask over your own face first before assisting anyone else, even your own children. Have you ever wondered why they would advise this?

It's because if your children lose consciousness, they are still breathing. If YOU lose consciousness, however, you won't be able to help your children. Even if you get their masks on them before you pass out, you won't be able to help them with what comes next.

This is an important analogy to remember for people who run around taking care of everything and everyone except themselves. Some people think that it is their duty to put everyone else's needs first when, in fact, unless you prioritise self-care, you will burn out and not be any good to anyone (whether that takes seconds or decades).

Please take care of yourselves, look after each other. If I have learnt anything over my years of being a teacher, its that, it really does take a village and from what I have seen at Newcomb Primary School, thanks to all of you, the village is alive and well.

Miss.Kylie

Mental Health and Wellbeing Leader



Term 1 2026

	Monday	Tuesday	Wednesday	Thursday	Friday
1	26th Jan Australia Day	27th Jan Whole Staff PD Day 11.30am ES PD	28th Jan Assessment Day	29th Jan First day for students Grade F-6	30th Jan
2	2nd Feb Staff Induction	3rd Feb	4th Feb No school for preps	5th Feb	6th Feb NPS Dress Up Day 9:00am Parade 2:50pm- Assembly
3	9th Feb Staff Induction	10th Feb 4.45pm School Council	11th Feb No school for preps	12th Feb 9:00am-12:00pm Eastern Gardens Excursion	13th Feb
4	16th Feb Staff Induction Evacuation Drill (onsite)	17th Feb Bravehearts Program (F-2)	18th Feb No school for preps	19th Feb 9-11am Open Morning All Welcome	20th Feb 2:50pm-Assembly All welcome
5	23rd Feb Staff Induction	24th Feb 3.15 Consultative Meeting	25th Feb No school for preps	26th Feb	27th Feb Clean Up Australia Day JSC Event: TBC
6	2nd March SSG Meetings	3rd March SSG Meetings	4th March SSG Meetings	5th March SSG Meetings	6th March SSG Meetings 2:50pm- Assembly All welcome
7	9th March Labour Day	10th March Parent Teacher Meet & Greet 3.15 Consultative Meeting	11th March NAPLAN Begins	12th March	13th March
8	16th March *9:00am - 2027 Prospective Enrolments School Tour	17th March 4.45pm School Council (AGM)	18th March Whole school Cross Country (Ervin Reserve)	19th March *9:00am - 2027 Prospective Enrolments School Tour	20th March Harmony Day 2:15pm - P&F Meeting 2:50pm- Assembly All welcome
9	23rd March NAPLAN Finishes	24th March School Review	25th March	26th March 11am 100s Club	27th March
10	30th March	31st March 2.15pm Brainstorm Productions - whole school show 'The Protectors'	1st April	2nd April Last day of term! 9:00am Assembly 1pm Colour Run & Easter Raffle 2:15 Finish	3rd of April Good Friday




GEELONG
Creators
CLUB

KIDS ONLY!



CREATIVITY
unleashed

with **Wishart**
CREATIVE

TUESDAYS 16:00-17:30 132 LITTLE MALOP ST



GEELONG FAMILY

FUN DAY

COME &
JOIN US!



**SATURDAY
28TH MARCH 2026
11-2PM . GEELONG RACECOURSE**

Tickets \$10.50pp (Family Pass \$30 for 2 adults and up to 5 kids)
kids two and under free

TICKETS





LORIKEET SUPPORTED PLAYGROUP

The playgroup will help you support your child's learning in the early years by building:

- everyday communication
- parenting confidence
- ideas to connect to your community
- a learning environment at home.

*Eligibility criteria applies, contact us if you would like join the playgroup.

TUESDAY
10.00AM–12.00PM

Newcomb Hall,
82 Wilsons Road, Newcomb

MORE INFORMATION

Scan the QRcode
or call Michelle on
0403 168 376.





PREP DISCOUNT



ALL PROGRAMS - 50% off

TERM 1 PROGRAMS ACROSS ALL SCHOOLS
GRADE PREP ONLY

SIGN UP AT
ANY TIME
DURING THE TERM!

**SKILLS - GAMES -
DEVELOPMENT**

**\$20
\$10
+GST
PER SESSION**

TO REDEEM DISCOUNT CONTACT NICK

QUERIES: NICK 0497 770 909
GEELONG@KELLYSPORTS.COM.AU
WWW.KELLYSPORTS.COM.AU/GEELONG



30% NEW BALANCE FOR
ALL TERM 1 BOOKINGS
*T&CS APPLY



NEWCOMB PRIMARY SCHOOL

NEWCOMB@KELLYCLUB.COM.AU
0448 058 160 | 1300 535 590



BEFORE SCHOOL CARE

7:00AM - 8:30AM

\$2.30

***AFTER 90% CCS OR
\$22.97 FULL FEE**

AFTER SCHOOL CARE

3:15PM - 6:00PM

\$3.03

***AFTER 90% CCS OR
\$30.28 FULL FEE**

ENROL NOW AND JOIN THE
KELLY CLUB FUN!
SCAN HERE





**KELLY
SPORTS**



TERM 1 SPORTS!



NEWCOMB P.S

FRIDAY'S MULTI-SPORT 3:30PM - 4:30PM 6TH FEB TO 27TH MAR

BASKETBALL | SOCCER | TENNIS | CRICKET

\$160
+GST FOR A 9
WEEK PROGRAM

**SIGN UP AT
ANY TIME
DURING THE
TERM!**



new balance

**30% NEW BALANCE FOR ALL
TERM 1 BOOKINGS
*T&CS APPLY**



**ENROL ONLINE
WWW.KELLYSPORTS.COM.AU/GEELONG
QUERIES: NICK 0497 770 909
GEELONG@KELLYSPORTS.COM.AU**



Year 7 Enrolment Information Evening

Tuesday 3 March, 2026 from 6:00pm to 7:30pm

Selected Entry Advanced Learning Program Information Evening

Tuesday 31 Mar, 2026: 6:30pm to 7:30pm

School Tours

Tuesday Mornings at 9:30am - see website to book

For further information, contact our office on
(03) 4243 0500 or
matthew.flinders.girls.sc@education.vic.gov.au



MFG
Matthew Flinders
Girls Secondary
College



GEELONG
HIGH SCHOOL

Join us to experience all that Geelong High School has to offer our prospective Year 7 students.

Wednesday 11th March 2026

INFORMATION EVENING

Session 1 - 4:30pm

Session 2 - 5:30pm

Session 3 - 6:30pm

Venue: C. A. Love Hall

*Sessions will be followed
by tours of the school.*

385 Ryrie Street, East Geelong, Victoria 3219

Egeelong.hs@education.vic.gov.au P (03) 5225 4100 geelonghigh.vic.edu.au

• *Prepares us for Life* •

Sacred Heart College Geelong

DISCOVERY

Friday 27 February

9.30am to 12.30pm

DAY

2026



Sacred Heart
College
G.E.E.L.O.N.G.

THE CITY OF
GREATER GEELONG

RAISING GRATEFUL HEARTS FORUM

**PRESENTED BY POSITIVE PARENTING
EXPERT ROD SOPER**

Discover practical rituals and simple language to help children notice the good, practise thankfulness and turn appreciation into meaningful acts of kindness.

Learn everyday strategies to embed gratitude into mealtimes, school runs, bedtime and family routines.

Explore age-appropriate (birth to 12 years) activities, conversation starters and quick games backed by research, child development principles and real-life practice.

Build empathy, resilience and joy as a family through positive connection and shared appreciation.

Take home a mini gratitude toolkit you can start using immediately to encourage kindness and connection at home and in your community.

This forum supports our ongoing commitment to strengthening family wellbeing, empowering parents, and building connected communities.



THURSDAY 27 FEBRUARY

7.00pm–9.00pm

VENUE

Norlane ARC
1/9 Cox Rd, Norlane

BOOKINGS

Scan the QR code
or visit

geelong.link/GratefulHearts



This is a FREE event but
bookings are essential.





keyassets

SERVING CHILDREN, FAMILIES & COMMUNITIES

COULD YOU FOSTER A CHILD?

We **URGENTLY** need **Foster Carers**
in your area. Enquire now on how
you can help change a child's life.

[Canifoster.com.au](https://canifoster.com.au) | 1800 932 273